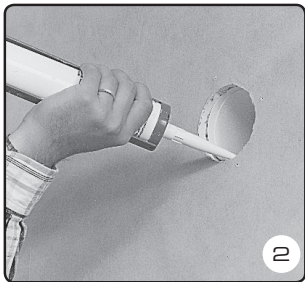


Use a core drill with min. dimension  $\varnothing 86\text{mm}$  for Fresh 80 and  $\varnothing 150\text{mm}$  for Fresh 80dB. Drill from inside to outside. Drill the hole so that the pipe slopes slightly downwards.

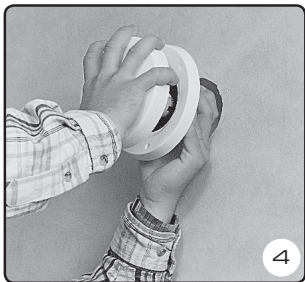
Fresh 80: With wall thickness larger than 360mm, additional telescopic pipe can be used (accessory). If the wall thickness is less than 300mm the pipe can be cut to required length.



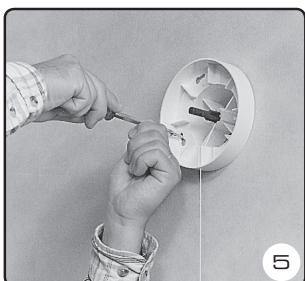
Mount the pipe and seal against the wall, both inside and outside, with for example a sealing agent.



Nail or screw the outside grille into place.



Open the front cover. Press the cover inwards and turn it clockwise. Remove the filter holder and filter.

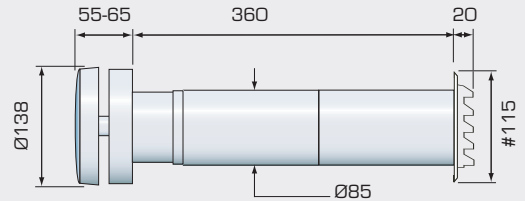


Place the internal part on the wall with 4 screws.



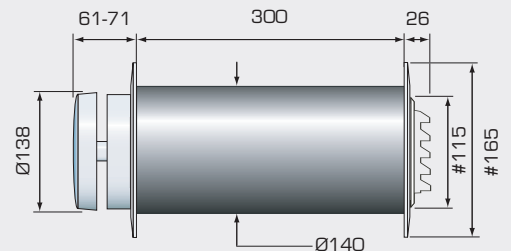
Install the filter and filter holder. Press the cover inwards and turn it anti-clockwise. The vent is now completely installed.

### Fresh 80



Maximum wall thickness 360 mm (standard).  
Hole-punching  $\varnothing 86\text{ mm}$ .

### Fresh 80-dB



Maximum wall thickness 300mm (standard).  
Hole-punching  $\varnothing 150\text{mm}$ .  
Internal cover plate #165 as standard.

### Placement

As high as possible on the wall, at least 10cm below the ceiling.

Above or in direct connection with a window or a radiator. In connection with floor heating the vent is placed at least 1 m away from the window and should be supplemented with an air-flow director (accessory).

Avoid drilling holes in studs and in proximity to electric wiring and water pipes.

When installing in existing ventilation duct, cover plates #165 or #210mm are available as accessories.

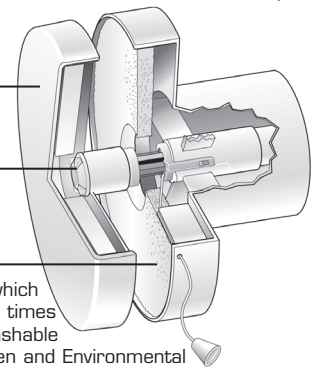
### Maintenance

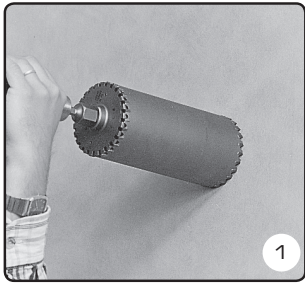
Front cover insulated from condensation and sound penetration.

A calibration screw for infinitely variable adjustment of an air gap, 0-17 mm.

Dust and insect filter supplied as a standard feature. Other filters available as accessories.

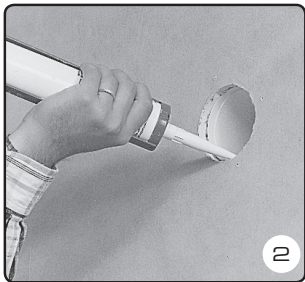
The internal part contain a filter which ought to be washed/replaced 1-2 times per year. The Standard filter is washable (use a gentle detergent). The Pollen and Environmental filter should be replaced with a new one. Place the internal part in an open position. Push the vent inwards and turn clockwise. Pull out the front cover and filter holder – the filter is now within reach. The vent should be open and shut at least once every 6 months.





Use a core drill with min. dimension  $\varnothing 102\text{mm}$  for Fresh 100 and  $\varnothing 150\text{mm}$  for Fresh 100dB. Drill from inside to outside. Drill the hole so that the pipe slopes slightly downwards.

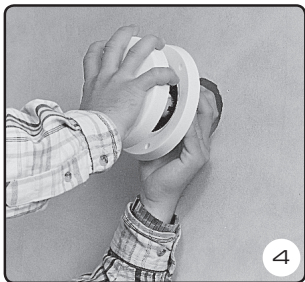
Fresh 100: With wall thickness larger than 360mm, additional telescopic pipe can be used (accessory). If the wall thickness is less than 300mm the pipe can be cut to required length.



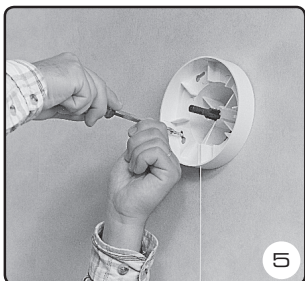
Mount the pipe and seal against the wall, both inside and outside, with for example a sealing agent.



Nail or screw the outside grille into place.



Open the front cover. Press the cover inwards and turn it clockwise. Remove the filter holder and filter.

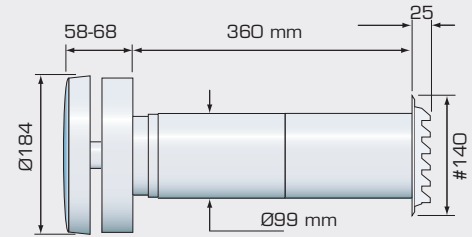


Place the internal part on the wall with 4 screws.



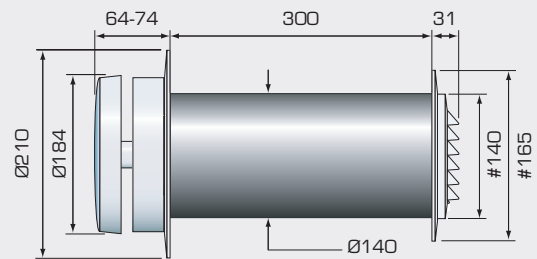
Install the filter and filter holder. Press the cover inwards and turn it anti-clockwise. The vent is now completely installed.

## Fresh 100



Maximum wall thickness 360 mm (standard).  
Hole-punching  $\varnothing 102\text{ mm}$

## Fresh 100-dB



Maximum wall thickness 300mm (standard).  
Hole-punching  $\varnothing 150\text{mm}$ .  
Internal cover plate #210 as standard.

## Placement

As high as possible on the wall, at least 10cm below the ceiling.

Above or in direct connection with a window or a radiator. In connection with floor heating the vent is placed at least 1 m away from the window and should be supplemented with an air-flow director (accessory).

Avoid drilling holes in studs and in proximity to electric wiring and water pipes.

When installing in existing ventilation duct, cover plates #165 or #210mm are available as accessories.

## Maintenance

Front cover insulated from condensation and sound penetration.

A calibration screw for infinitely variable adjustment of an air gap, 0-17 mm.

Dust and insect filter supplied as a standard feature. Other filters available as accessories.

The internal part contain a filter which ought to be washed/replaced 1-2 times per year. The Standard filter is washable (use a gentle detergent). The Pollen and Environmental filter should be replaced with a new one. Place the internal part in an open position. Push the vent inwards and turn clockwise. Pull out the front cover and filter holder – the filter is now within reach. The vent should be open and shut at least once every 6 months.

